

**Rehabilitation and extension of the M3 National Road in the Republic
of Moldova, Chisinau – Giurgiulesti/Romania Border, Chisinau –
Porumbrei section**

ANNEX 3

Project beneficiary:



Elaborator:



MARCH 2026

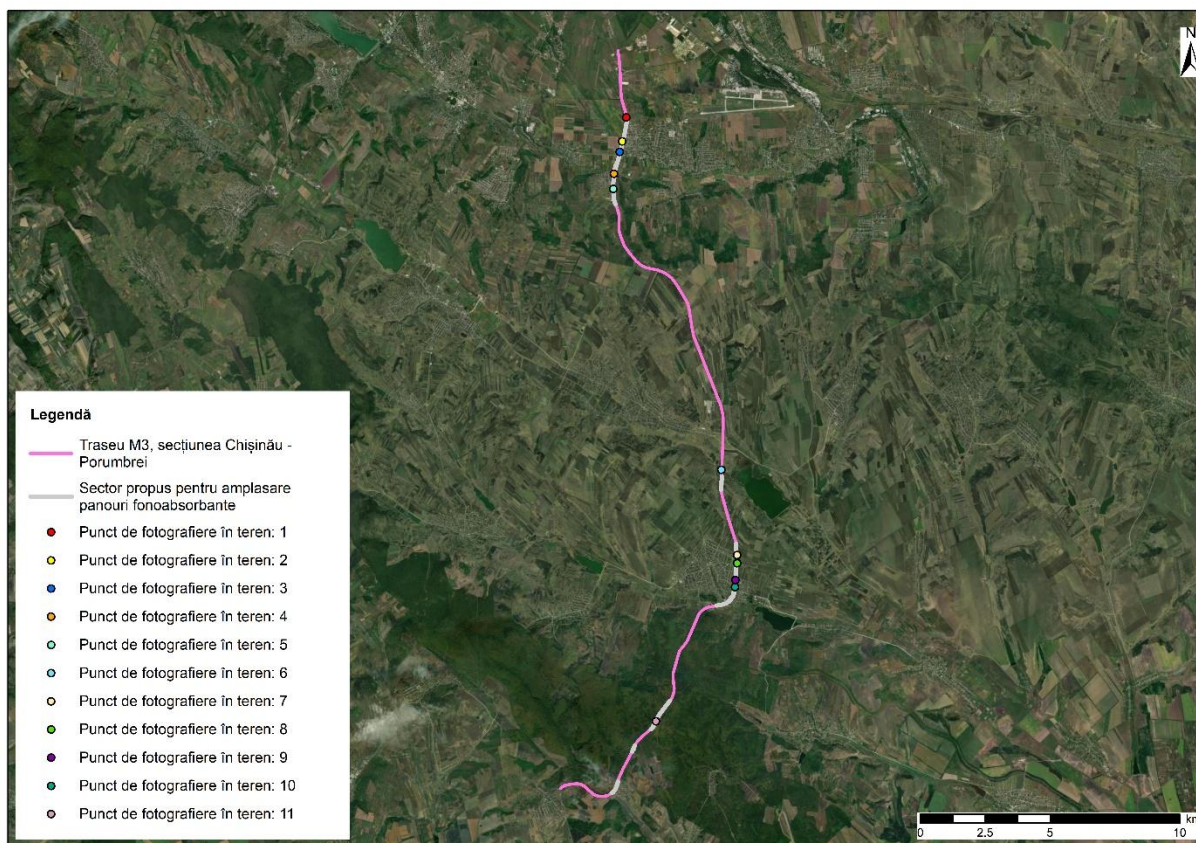


Figure 1. Location of sampling points in the field, M3 Chisinau – Porumbrei Road



Figure 2. The M3 Chisinau – Porumbrei road, the proposed sector for the installation of sound-absorbing panels between km 2+565 – 4+310. Photograph point - GPS coordinates (EPSG:4326): Lat. 46.927217 N, Long. 28.869350 E, southeast direction



Figure 3. The M3 Chisinau – Porumbrei road, the proposed sector for the installation of sound-absorbing panels between km 2+565 – 4+310. Photograph point - GPS coordinates (EPSG:4326): Lat. 46.918933 N, Long. 28.866633 E, northeast direction



Figure 4. The M3 Chisinau – Porumbrei road, the proposed sector for the installation of sound-absorbing panels between km 2+565 – 4+310. Photograph point - GPS coordinates (EPSG:4326): Lat. 46.915350 N, Long. 28.865083 E, northeast direction

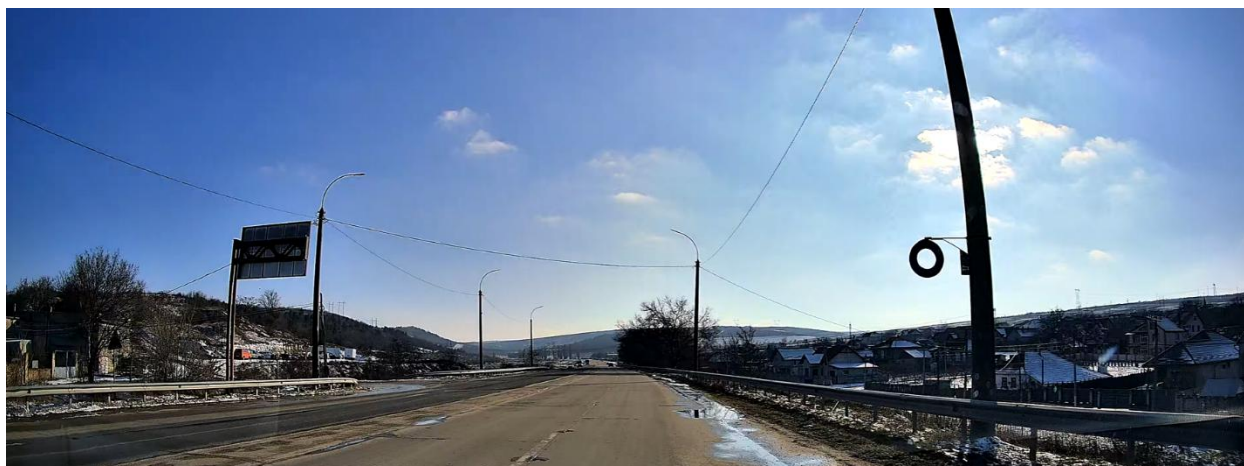


Figure 5. The M3 Chisinau – Porumbrei road, the proposed sector for the installation of sound-absorbing panels between km 4+480 – 6+015. Photograph point - GPS coordinates (EPSG:4326): Lat. 46.907867 N, Long. 28.861700 E, southbound



Figure 6. The M3 Chisinau – Porumbrei road, the proposed sector for the installation of sound-absorbing panels between km 4+480 – 6+015. Photograph point - GPS coordinates (EPSG:4326): Lat. 46.902633 N, Long. 28.860933 E, northwest direction



Figure 7. The M3 Chisinau – Porumbrei road, the proposed sector for the installation of sound-absorbing panels between km 18+015 – 18+550. Photograph point - GPS coordinates (EPSG:4326): Lat. 46.803533 N, Long. 28.908650 E, southeast direction



Figure 8. The M3 Chisinau – Porumbrei road, the proposed sector for the installation of sound-absorbing panels between km 20+700 – 23+500. Photograph point - GPS coordinates (EPSG:4326): Lat. 46.773767 N, Long. 28.914467 E, northwest direction



Figure 9. The M3 Chisinau – Porumbrei road, the proposed sector for the installation of sound-absorbing panels between km 20+700 – 23+500. Photograph point - GPS coordinates (EPSG:4326): Lat. 46.770950 N, Long. 28.914267 E, southbound



Figure 10. The M3 Chisinau – Porumbrei road, the proposed sector for the installation of sound-absorbing panels between km 20+915 – 22+975. Photograph point - GPS coordinates (EPSG:4326): Lat. 46.765167 N, Long. 28.912967 E, southbound



Figure 11. The M3 Chisinau – Porumbrei road, the proposed sector for the installation of sound-absorbing panels between km 20+915 – 22+975. Photograph point - GPS coordinates (EPSG:4326): Lat. 46.762750 N, Long. 28.912567 E, southwest direction

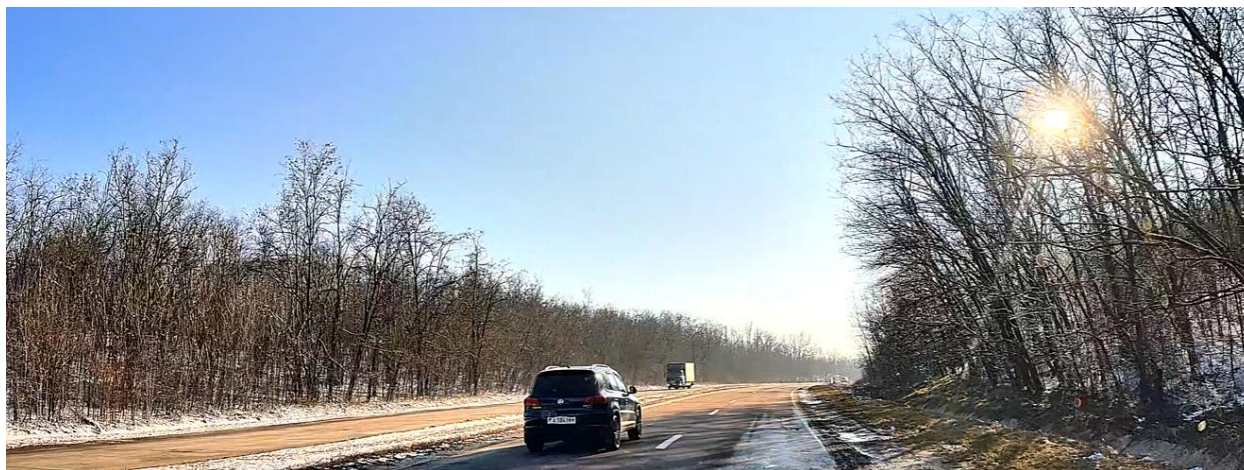


Figure 12. The M3 Chisinau – Porumbrei road, the proposed sector for the installation of sound-absorbing panels between km 27+910 – 29+065. Photograph point - GPS coordinates (EPSG:4326): Lat. 46.717583 N, Long. 28.869400 E, southwest direction